



Included Activities

-  Zodiac Cruises
-  Walks & Hikes
-  Photography
-  Expert Lectures
-  Polar Plunge
-  Birdwatching
-  Historical Sites

Optional Activities*

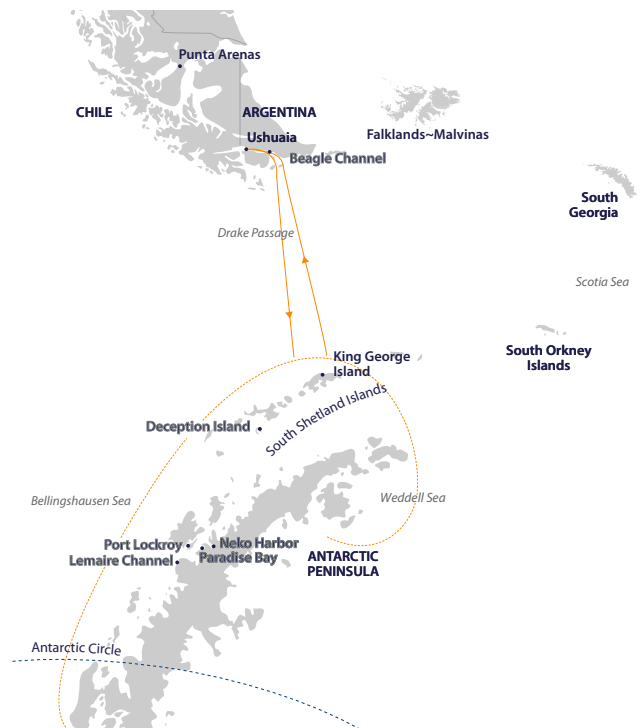
-  Sea Kayaking
-  Snorkelling
-  Scuba Diving
-  Paddling

*Optional activities available on select voyages, at additional cost.

Circle and Weddell

Antarctic Peninsula, Antarctic Circle, Weddell Sea | 18 Days

Antarctic adventurers can aim to tick two boxes off their must-do list on this voyage, where they have the opportunity to visit regions in Antarctica that most people will never experience, not even among those who have been to Antarctica – below the Antarctic Circle and attempting to forge a path through the ice in the Weddell Sea. As you venture south on the western side of the Antarctic Peninsula, passing spectacular, towering cliffs and glittering icebergs, there is a chance you may see Adélie penguins and ice seals such as leopard and crabeater seals resting on ice floes. In the Weddell Sea, and under favourable weather and sea ice conditions, be prepared to encounter an unimaginably spectacular world of icy landscapes. It is an icy realm that few have been fortunate to experience.



HIGHLIGHTS

- Raise a toast to celebrate crossing the Antarctic Circle (weather and conditions permitting)
- Marvel at some of the most dazzling icy landscapes on the Peninsula as we forge our way south to the Antarctic Circle
- With favourable weather and conditions, we hope to explore the mind-blowing, icy realm of the Weddell Sea
- We hope to encounter unique ice seals lounging on sea ice



Itinerary Overview

DAY 1 Arrive in Ushuaia and transfer to your hotel.

DAY 2 Embark in Ushuaia.

DAYS 3–4 Drake Passage crossing.

DAYS 5–15 To be part of a voyage that attempts to explore the remotest and wildest parts of this region on the planet, gives you more than basic bragging rights. Venturing below the Antarctic Circle, an imaginary line at latitude of 66° 33' south, is a chance to enter a different world that is rarely seen. It feels more isolated and distant than farther north, with great swathes of pack ice and dreamlike icebergs. Thread through pack ice and narrow channels where scenes of ice-clad mountains, whales fattening up on krill, leopard seals patrolling the waters for vulnerable penguins, and snow petrels soaring above, abound. Join an exclusive group of adventurers as we raise a glass to toast our arrival below the Antarctic Circle.

As we return north, we make our way to the Weddell Sea, where we plan to visit some of our favourite places around the Antarctic Peninsula. We explore coastlines by Zodiac, landing on beaches where fur seals frolic and fledging penguins take to the waters for the first time. As we approach Antarctic Sound, gateway to the Weddell Sea, we hope for favourable weather and ice conditions

to grant our good ship entry to its frozen realm.

The Weddell Gyre pushes enormous amounts of ice up towards the area near the Antarctic Sound, blocking the entrance to the Weddell Sea, but a visit to the region still has its rewards.

We hope to gaze upon gigantic tabular icebergs the size of skyscrapers as we attempt to push through seemingly impenetrable sea ice in our Zodiacs to land on a beach, where ancient fossils can be found. The wildlife we hope to encounter in the Weddell Sea region makes the attempt worthwhile. The abundant ice attracts ice seals such as crabeater, leopard and Weddell seals, which all breed and birth on sea ice. Large numbers of orca, minke and humpback whales are also commonly seen here.

DAYS 16–17 Drake Passage crossing.

DAY 18 Disembark in Ushuaia.

You can view the full itinerary on our website.

Dates

Start/Finish	Duration	Dates	Voyage Code	Type of Voyage
Ushuaia/Ushuaia	18 Days	08 Mar '24 – 25 Mar '24	ACW001S	Sail

Voyage Codes: G = Greg Mortimer | S = Sylvia Earle

For more information and to book, contact your preferred travel advisor or Aurora Expeditions: